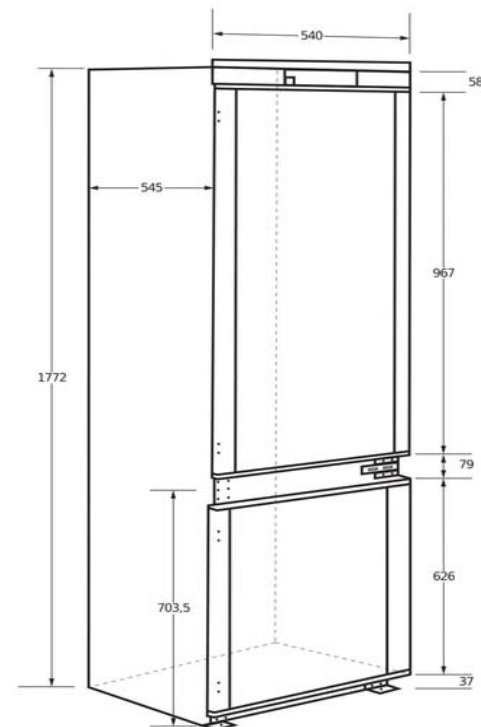
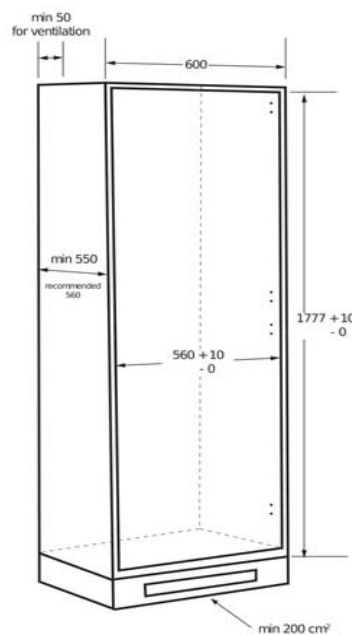




- Type: Combi
- **No Frost** Cooling Technology
- Total Capacity: **248lt**
- Refrigerator Capacity: **186lt**
- Freezer Capacity: **62lt**
- Automatic Defrost System
- Chromed Wine rack
- Glass Shelves
- 3 Freezer Drawers
- 1 Stay Fresh zone 0°C
- **Led** Lights
- 2 Fruits/Vegetables Drawer
- 4 Crystal clear door Shelves
- 2+1 adjustable shelves
- Storage period in event of power failure: **9 hours**
- Energy Class: **E - OLD Energy A++**
- Annual Energy Efficiency: **216 kW**
- Noise Level: **37dB**



DOOR CUT DIMENSIONS:

R/TOR DOOR: W-59.6mm

FREEZER DOOR: H-71.8mm W-59.6mm